



# The European Rare Blood Disorders Platform

Gutierrez-Valle V\* <sup>1</sup>, Gulbis B<sup>2</sup>, Kleanthous M<sup>3</sup>, Kountouris P<sup>3</sup>, Tamana S<sup>3</sup>, Pellegrini M<sup>4</sup>, Fenaux P<sup>4</sup>, Mañú-Pereira MM<sup>1</sup>  
<sup>1</sup>Vall d'Hebron Research Institute- University Hospital Vall d'Hebron, Barcelona, Spain, <sup>2</sup>Hôpital ERASME/LHUB-ULB, Brussels, Belgium, <sup>3</sup>Cyprus Institute of Neurology and Genetics, Nicosia, Cyprus, <sup>4</sup>AP-HP, Hôpital Saint Louis, Paris, France



European  
Reference  
Network

for rare or low prevalence  
complex diseases

Network

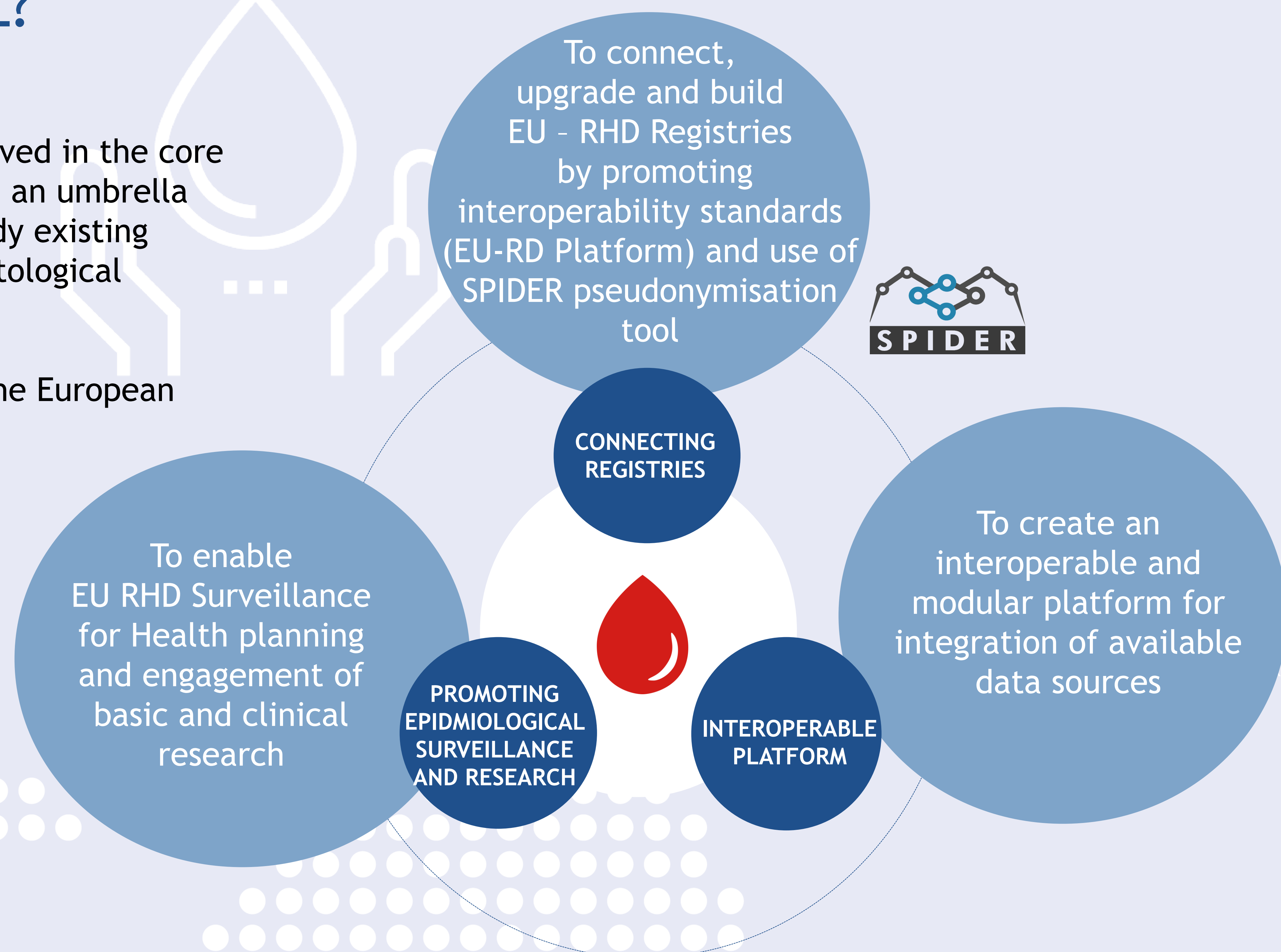
Hematological  
Diseases (ERN EuroBloodNet)



## What is ENROL?

**ENROL** has been conceived in the core of ERN-EuroBloodNet as an umbrella for both new and already existing registries on rare hematological diseases (RHD).

ENROL is endorsed by the European Hematology Association



## ENROL Consortium

**Coordinator**  
**Dr Maria del Mar Mañú Pereira**  
Vall d'Hebron University  
Hospital Foundation - Research  
Institute (VHIR) - Vall d'Hebron  
University Hospital (HUVH),  
Barcelona, Spain

**Prof. Béatrice Gulbis**  
Erasme University Hospital (ERASME)  
/ LHUB-ULB, Brussels, Belgium

**Prof. Marina Kleanthous**  
The Cyprus Foundation for  
muscular dystrophy research  
(CING), Nicosia, Cyprus

**Prof Pierre Fenaux**  
Assistance Publique -  
Hopitaux de Paris (AP-HP),  
Paris, France

## Collaboration with EURORDIS and European Patient Advocacy Groups (ePAGs)

